

# ARTCC ARGENTINO AD 2.SASJ

**NO VALIDO PARA NAVEGACION REAL. ADAPTADO PARA SU UTILIZACION EN UN AMBITO VIRTUAL**  
**SASJ – JUJUY / GDOR. GUZMAN**

## AD 2.17 ESPACIO AEREO ATC

### Zona de Control:

- |                                     |   |
|-------------------------------------|---|
| 1. Designación:                     | Zona de Control Jujuy   |
| 2. Límites verticales:              | FL 095<br>GND   |
| 3. Clasificación del espacio aéreo: | C   |
| 4. Distintivo de llamada:           | JUJUY TORRE   |
| 5. Observaciones:                   | Se brinda Servicio de Control de Aeródromo. El Servicio de Control de Aproximación lo brinda SALTA TORRE.                 |
| 6. Altitud de transición:           | 9000 FT   |
| 7. Nivel de transición:             | QNH de 977 a 994      FL 110<br>QNH de 995 a 1013    FL 105<br>QNH de 1014 a 1031   FL 100<br>QNH de 1032 a 1050   FL 095 |

## AD 2.18 INSTALACIONES DE COMUNICACIONES ATS

SERVICIO	DISTINTIVO DE LLAMADA	FRECUENCIA	OBSERVACIONES
TWR	Jujuy Torre	118.700	-

## AD 2.19 CARTAS AERONAUTICAS

- |                       |   |
|-----------------------|---|
| - Plano de aeródromo: | SASJ.APT  |
| - Cartas IAC:         | SASJ.IAC NO.1 RWY 34<br>SASJ.IAC NO.2 RWY 34<br>SASJ.IAC NO.3 RWY 34<br>SASJ.IAC NO.4 RWY 34<br>SASJ.IAC NO.5 RWY 34  |
| - Cartas SID:         | SASJ.SID INFER4A (RWY 34)<br>SASJ.SID IRILI4A (RWY 16 / 34)<br>SASJ.SID OSEBO4A (RWY 16)<br>SASJ.SID SUPER4A (RWY 34) |
| - Cartas STAR:        | SASJ.STAR JUJUY1 ORBAK1 (RWY 34)  |

(DEJADO EN BLANCO INTENCIONALMENTE)

# AD 2.SASJ.S2 (TWR)

## AD 2.20 REGLAMENTACION DE TRANSITO LOCALES

### NORMAS PARA EL MOVIMIENTO Y ESTACIONAMIENTO DE AERONAVES EN LA PLATAFORMA

#### ESTACIONAMIENTO

**Posición 1, 2 y 3,** aeronaves tipo MD80, A320, B737, F28, similar o menor porte.

**Posición 1A,** excepcionalmente para uso de aeronaves tipo B757, B767, con limitación de posición 2 hasta F28 o similar.

**Posición 4 y 5,** aeronaves hasta 16 mts. de envergadura.

**Posición 6,** aeronaves tipo Metro III, B200, similar o menor porte.

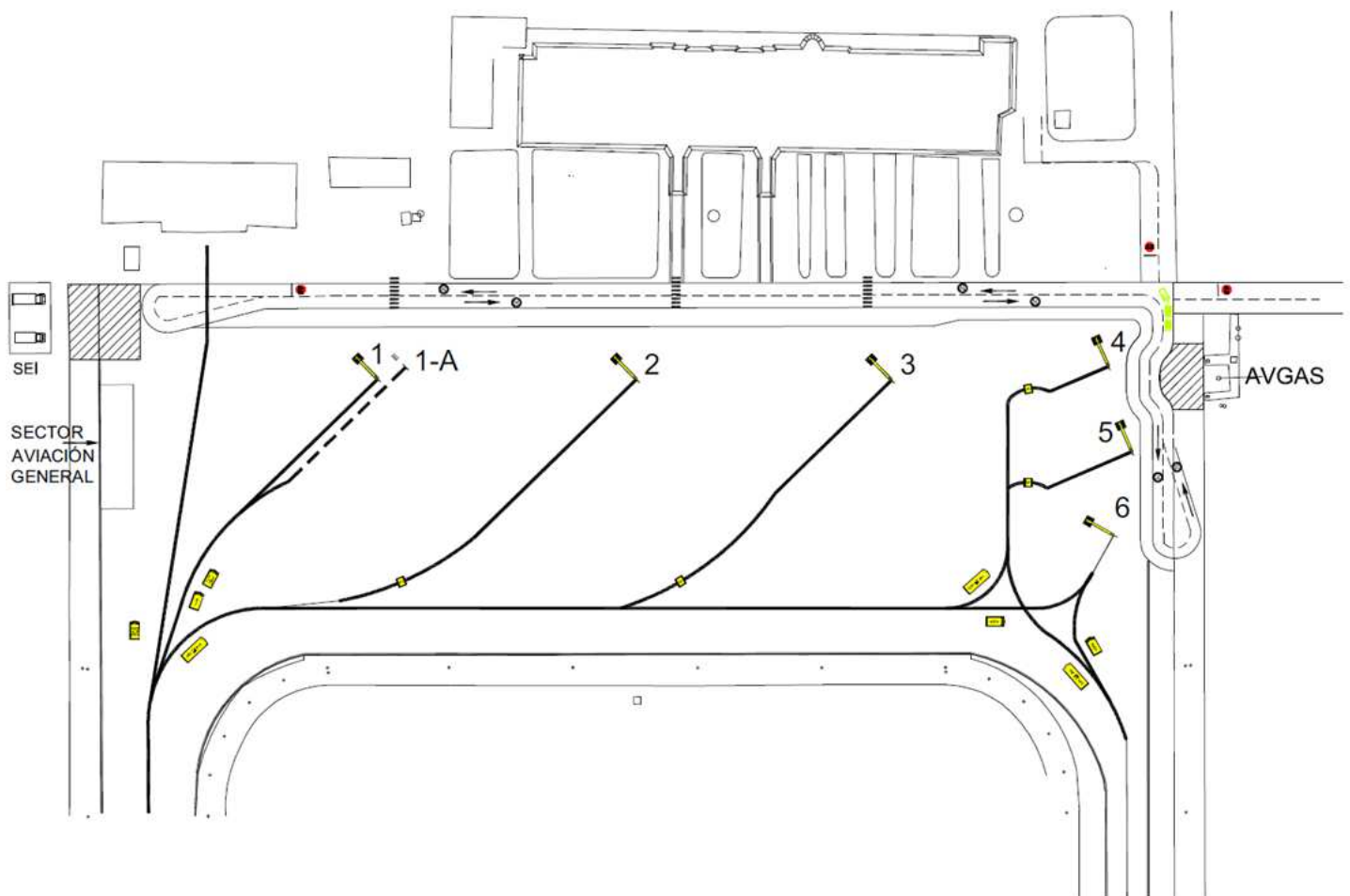
**Sector Norte Aviación General:** En el sector norte de plataforma, se dispone de un sector destinado al estacionamiento de aeronaves de pequeño porte, hasta 15 mts. de envergadura.

#### INGRESOS

Las aeronaves clave "B" o superior ingresarán por rodaje norte.

Las aeronaves clave "A" podrán ingresar indistintamente por rodaje norte o sur.

(DEJADO EN BLANCO INTENCIONALMENTE)



(DEJADO EN BLANCO INTENCIONALMENTE)

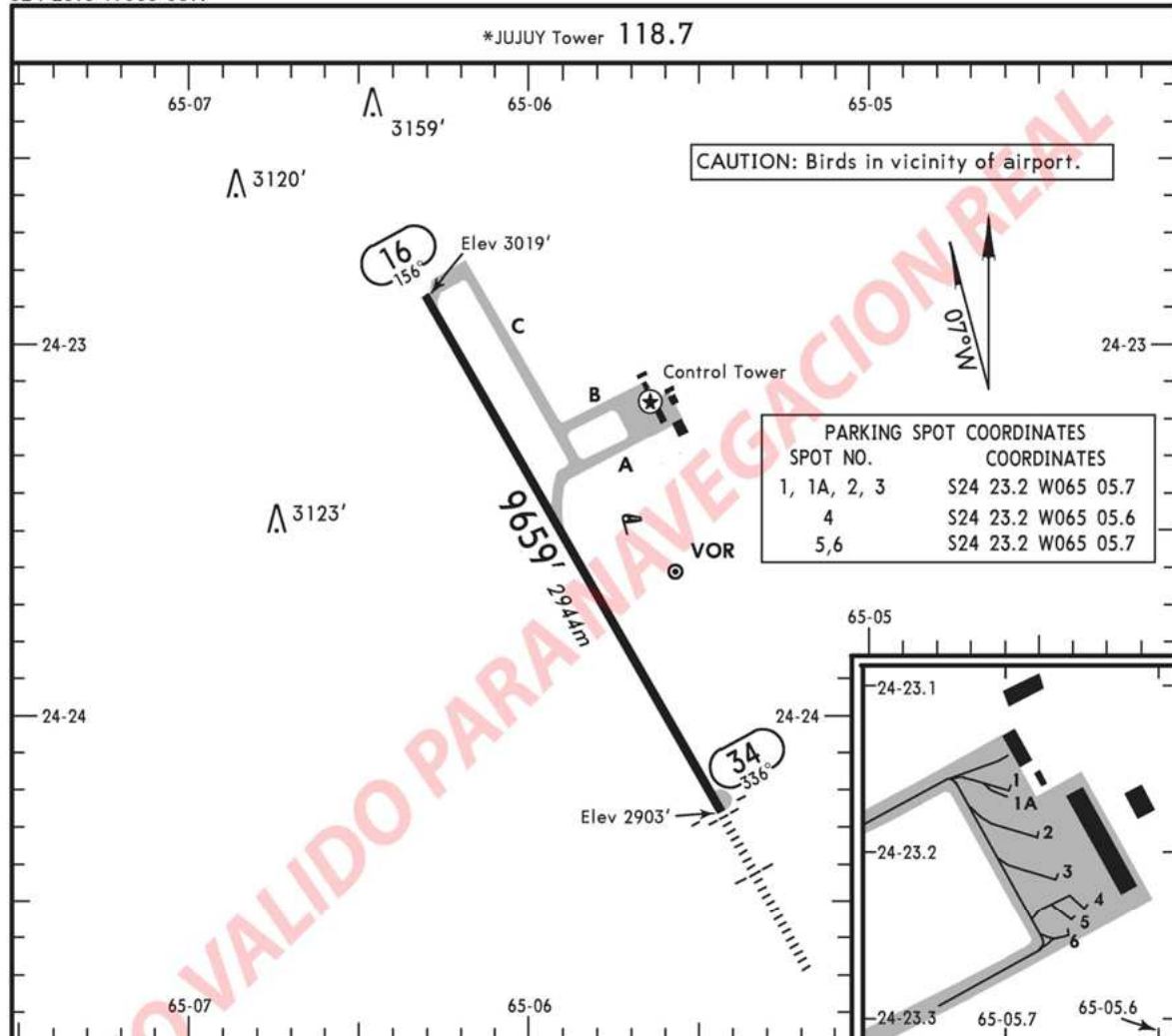
APT

SASJ

Apt Elev **3019'**  
S24 23.6 W065 05.9

JUJUY, ARGENTINA

GOBERNADOR HORACIO GUZMAN



ADDITIONAL RUNWAY INFORMATION			USABLE LENGTHS		TAKE-OFF	WIDTH
RWY			— LANDING BEYOND — Threshold	Glide Slope		
16	RL	PAPI-L (angle 3.0°)				131'
34	RL	HIALS PAPI-L (angle 3.0°)		8836' 2693m		40m

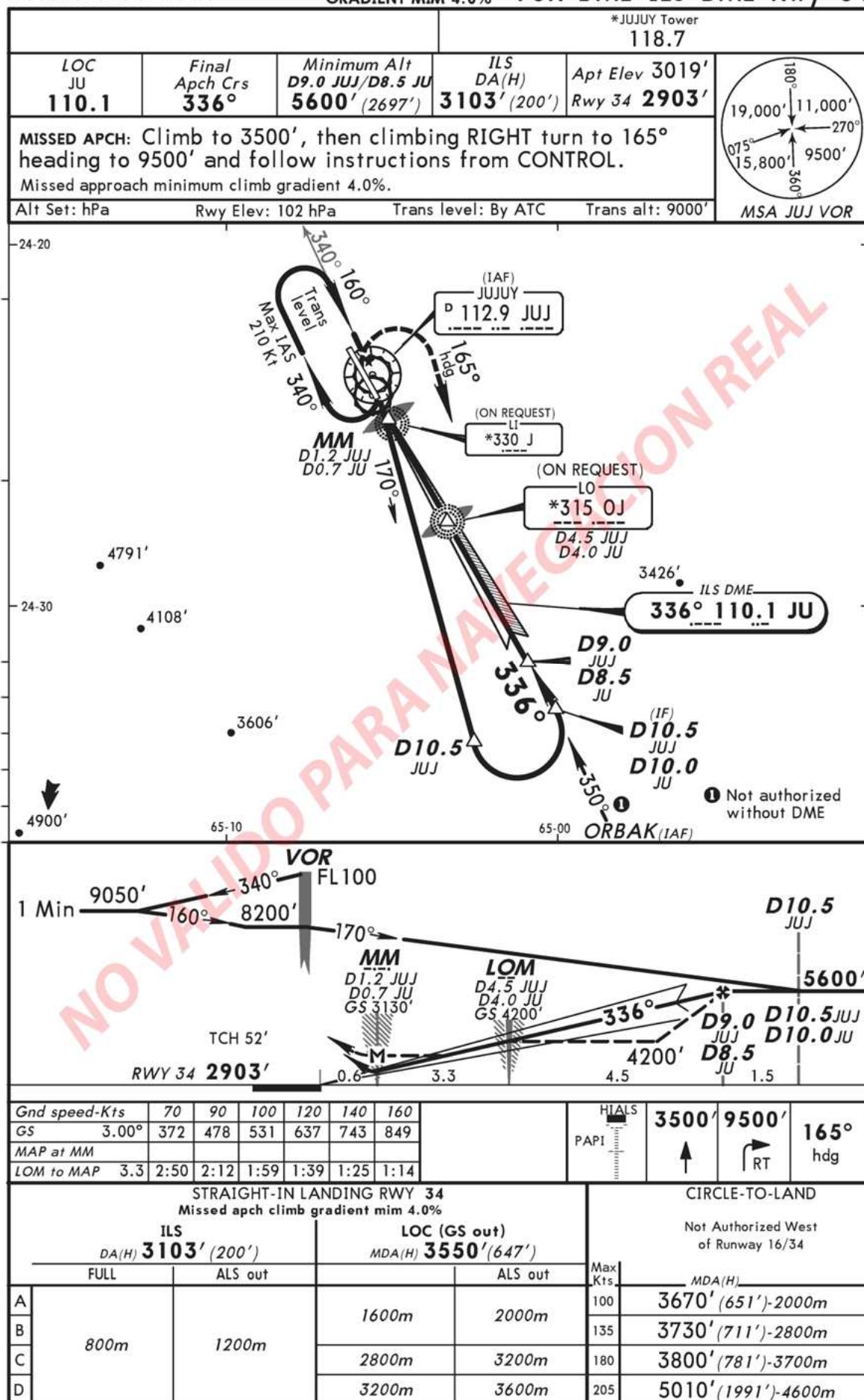
SASJ  
GOBERNADOR  
HORACIO GUZMAN

JUJUY, ARGENTINA

No.1

MISSED APCH CLIMB  
GRADIENT MIM 4.0%

VOR DME ILS DME Rwy 34





**MISSED APCH CLIMB  
GRADIENT MIN 4.0%**

LOC JU 110.1					Final Apch Crs 336°		Minimum Alt D8.5 JU 5600' (2697')		ILS DA(H) 3103' (200')		Apt Elev 3019' Rwy 34 2903'		<div><div>180°</div><div>11,000'</div><div>270°</div><div>9500'</div><div>360°</div><div>15,800'</div><div>075°</div><div>19,000'</div></div>	
MISSED APCH: Climb to 3500', then climbing RIGHT turn to 165° heading to 9500' and follow instructions from CONTROL. Missed approach minimum climb gradient 4.0%.													MSA J LCTR	
Alt Set: hPa		Rwy Elev: 102 hPa		Trans level: By ATC		Trans alt: 9000'								

24-25

24-30

160°

165°

173°

336°

340°

336°

160°

173°

336°

340°

336°

160°

173°

336°

340°

336°

160°

173°

336°

340°

336°

160°

173°

336°

340°

336°

160°

173°

336°

340°

336°

160°

173°

336°

340°

336°

160°

173°

336°

340°

336°

160°

173°

336°

340°

336°

160°

173°

336°

340°

336°

160°

173°

336°

340°

336°

160°

173°

336°

340°

336°

160°

173°

336°

340°

336°

160°

173°

336°

340°

336°

160°

173°

336°

340°

336°

160°

173°

336°

340°

336°

160°

173°

336°

340°

336°

160°

173°

336°

340°

336°

160°

173°

336°

340°

336°

160°

173°

336°

340°

336°

160°

173°

336°

340°

336°

160°

173°

336°

340°

336°

160°

173°

336°

340°

336°

160°

173°

336°

340°

336°

160°

173°

336°

340°

336°

160°

173°

336°

340°

336°

160°

173°

336°

340°

336°

160°

173°

336°

340°

336°

160°

173°

336°

340°

336°

160°

173°

336°

340°

336°

160°

173°

336°

340°

336°

160°

173°

336°

340°

336°

160°

173°

336°

340°

336°

160°

173°

336°

340°

336°

160°

173°

336°

340°

336°

160°

173°

336°

340°

336°

160°

173°

336°

340°

336°

160°

173°

336°

340°

336°

160°

173°

336°

340°

336°

160°

173°

336°

340°

336°

160°

173°

336°

340°

336°

160°

173°

336°

340°

336°

160°

173°

336°

340°

336°

160°

173°

336°

340°

336°

160°

173°

336°

340°

336°

160°

173°

336°

340°

336°

160°

173°

336°

340°

336°

160°

173°

336°

340°

336°

160°

173°

336°

340°

336°

160°

173°

336°

340°

336°

160°

173°

336°

340°

336°

160°

173°

336°

340°

336°

160°

173°

336°

340°

336°

160°

173°

336°

340°

336°

160°

173°

336°

340°

336°

160°

173°

336°

340°

336°

160°

173°

336°

340°

336°

160°

173°

336°

340°

336°

160°

173°

336°

340°

336°

160°

173°

336°

340°

336°

160°

173°

336°

340°

336°

160°

173°

336°

340°

336°

160°

173°

336°

340°

336°

160°

173°

336°

340°

336°

160°

173°

336°

340°

336°

160°

173°

336°

340°

336°

160°

173°

336°

340°

336°

160°

173°

336°

340°

336°

160°

173°

336°

340°

336°

160°

173°

336°

340°

336°

160°

173°

336°

340°

336°

160°

173°

336°

340°

336°

160°

173°

336°

340°

336°

160°

173°

336°

340°

336°

160°

173°

336°

340°

336°

160°

173°

336°

340°

336°

160°

173°

336°

340°

336°

160°

173°

336°

340°

336°

160°

173°

336°

340°

336°

160°

173°

336°

340°

336°

160°

173°

336°

340°

336°

160°

173°

336°

340°

336°

160°

173°

336°

340°

336°

160°

173°

336°

340°

336°

160°

173°

336°

340°

336°

160°

173°

336°

340°

336°

160°

173°

336°

340°

336°

160°

173°

336°

340°

336°

160°

173°

336°

340°

336°

160°

173°

336°

340°

336°

160°

173°

336°

340°

336°

160°

173°

336°

340°

336°

160°

173°

336°

340°

336°

160°

173°

336°

340°

336°

160°

173°

336°

340°

336°

160°

173°

336°

340°

336°

160°

173°

336°

340°

336°

160°

173°

336°

340°

336°

160°

173°

336°

340°

336°

160°

173°

336°

340°

336°

160°

173°

336°

340°

336°

160°

173°

336°

340°

336°

160°

173°

336°

340°

336°

160°

173°

336°

340°

336°

160°

173°

336°

340°

336°

160°

173°

336°

340°

336°

160°

173°

336°

340°

336°

160°

173°

336°

340°

336°

160°

173°

336°

340°

336°

160°

173°

336°

340°

336°

160°

173°

336°

340°

336°

160°

173°

336°

340°

336°

160°

173°

336°

340°

336°

160°

173°

336°

340°

336°

160°

173°

336°

340°

336°

160°

173°

336°

340°

336°

160°

173°

336°

340°

336°

160°

173°

336°

340°

336°

160°

173°

336°

340°

336°

160°

173°

336°

340°

336°

160°

173°

336°

340°

336°

160°

173°

336°

340°

336°

160°

173°

336°

340°

336°

160°

173°

336°

340°

336°

160°

173°

336°

340°

336°

160°

173°

336°

340°

336°

160°

173°

336°

340°

336°

160°

173°

336°

340°

336°

160°

173°

336°

340°

336°

160°

173°

336°

340°

336°

160°

173°

336°

340°

336°

160°

173°

336°

340°

336°

160°

173°

336°

340°

336°

160°

173°

336°

340°

336°

160°

173°

336°

340°

336°

160°

173°

336°

340°

336°

160°

173°

336°

340°

336°

160°

173°

336°

340°

336°

160°

173°

336°

340°

336°

160°

173°

336°

340°

336°

160°

173°

336°

340°

336°

160°

173°

336°

340°

336°

160°

173°

336°

340°

336°

160°

173°

336°

340°

336°

160°

173°

336°

340°

336°

160°

173°

336°

340°

336°

160°

173°

336°

340°

336°

160°

173°

336°

340°

336°

160°

173°

336°

340°

336°

160°

173°

336°

340°

336°

160°

173°

336°

340°

336°

160°

173°

336°

340°

336°

160°

173°

336°

340°

336°

160°

173°

336°

340°

336°

160°

173°

336°

340°

336°

160°

173°

336°

340°

336°

160°

173°

336°

340°

336°

160°

173°

336°

340°

336°

160°

173°

336°

340°

336°

160°

173°

336°

340°

336°

160°

173°

336°

340°

336°

160°

173°

336°

340°

336°

160°

173°

336°

340°

336°

160°

173°

336°

340°

336°

160°

173°

336°


340°

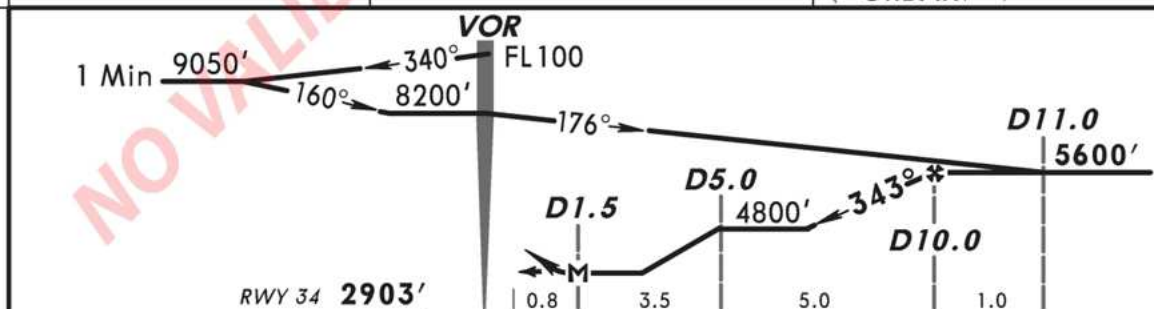
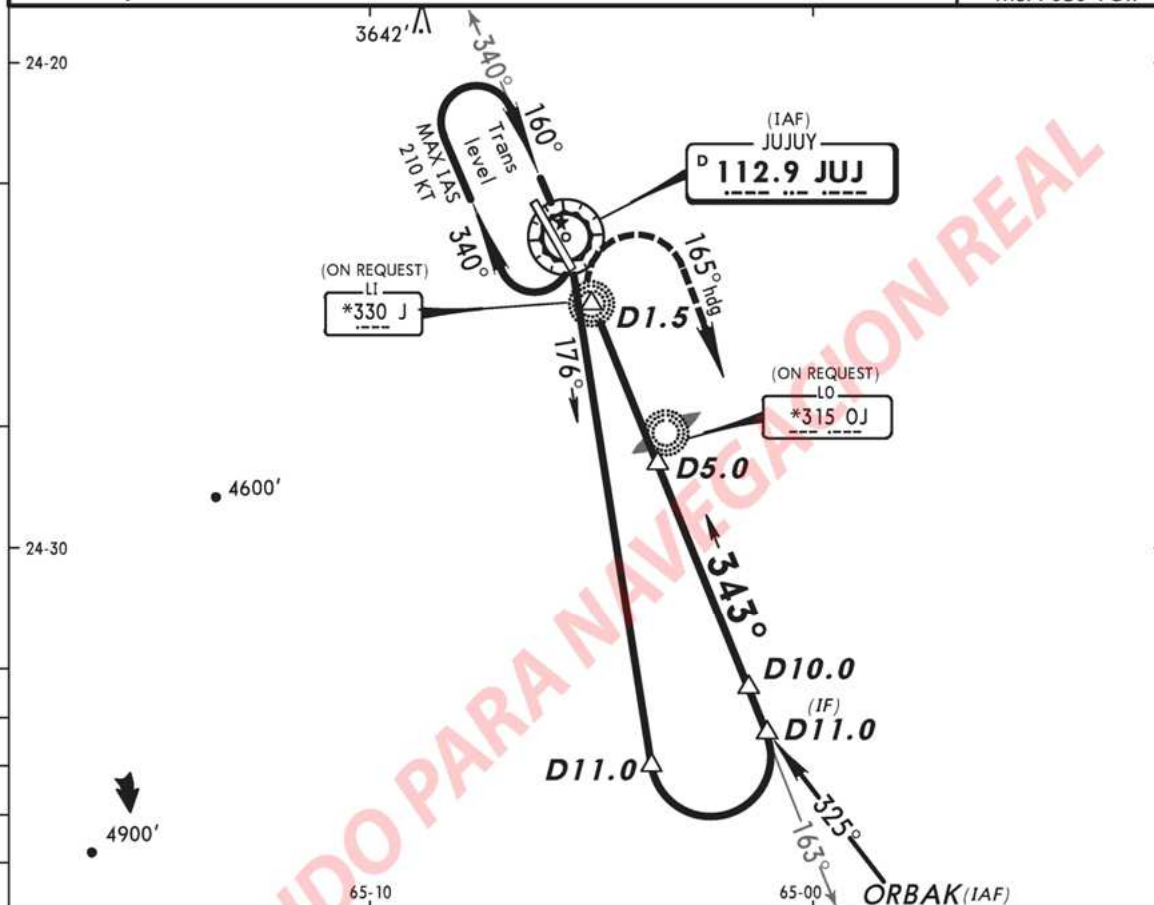
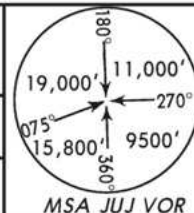
336°

160°

SASJ  
GOBERNADOR  
HORACIO GUZMAN

JUJUY, ARGENTINA  
No.3  
VOR DME Rwy 34

				*JUJUY Tower 118.7	
VOR JUJ <b>112.9</b>	Final Apch Crs <b>343°</b>	Minimum Alt <b>D10.0</b> <b>5600'</b> (2697')	MDA(H) <b>3550'</b> (647')	Apt Elev 3019' Rwy 34 <b>2903'</b>	
MISSED APCH: Climbing RIGHT turn to 165° heading to 9500' and follow instructions from CONTROL. Missed approach minimum climb gradient 3.0%.					
Alt Set: hPa		Rwy Elev: 102 hPa	Trans level: By ATC	Trans alt: 9000'	
1. DME required.					

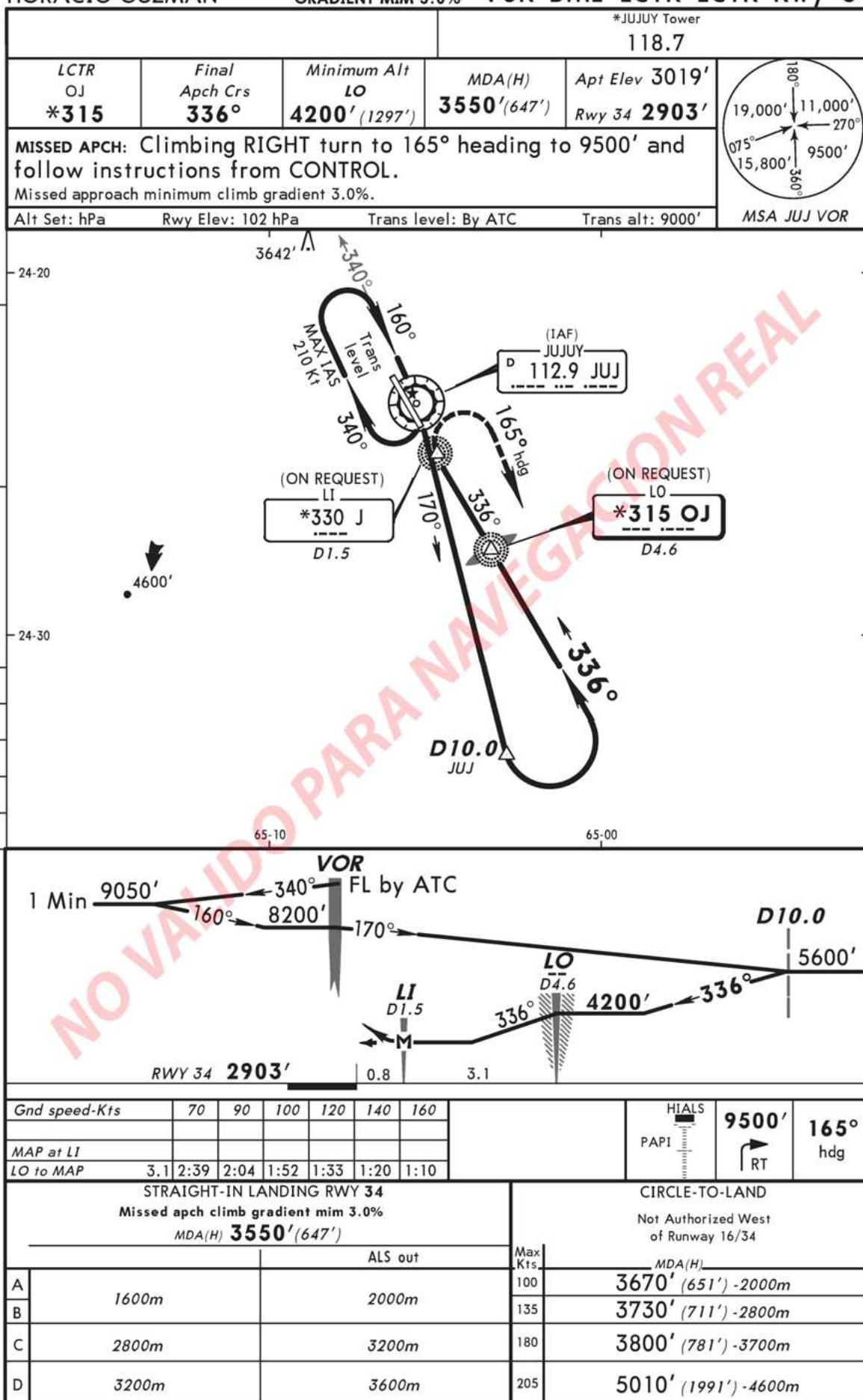


Gnd speed-Kts	70	90	100	120	140	160		
MAP at D1.5								
D10.0 to MAP	8.5	7:17	5:40	5:06	4:15	3:39	3:11	

STRAIGHT-IN LANDING RWY 34 Missed apch climb gradient mim 3.0% MDA(H) <b>3550'</b> (647')				CIRCLE-TO-LAND Not Authorized West of Runway 16/34	
ALS out			Max Kts	MDA(H)	
A	1600m	2000m	100	3670' (651') -2000m	
B			135	3730' (711') -2800m	
C	2800m	3200m	180	3800' (781') -3700m	
D	3200m	3600m	205	5010' (1991') -4600m	

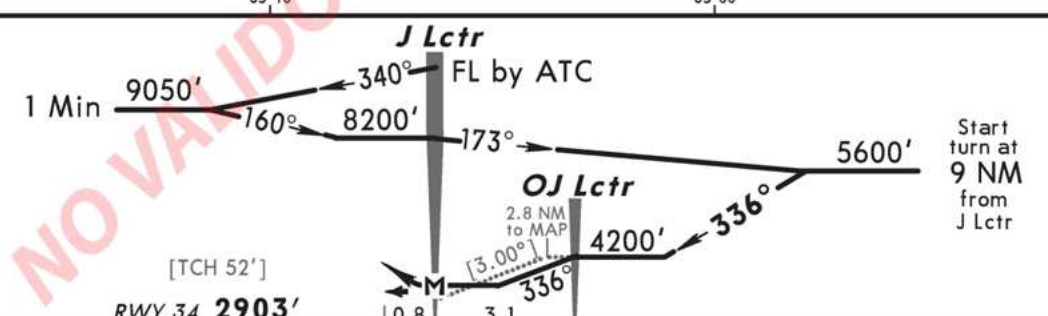
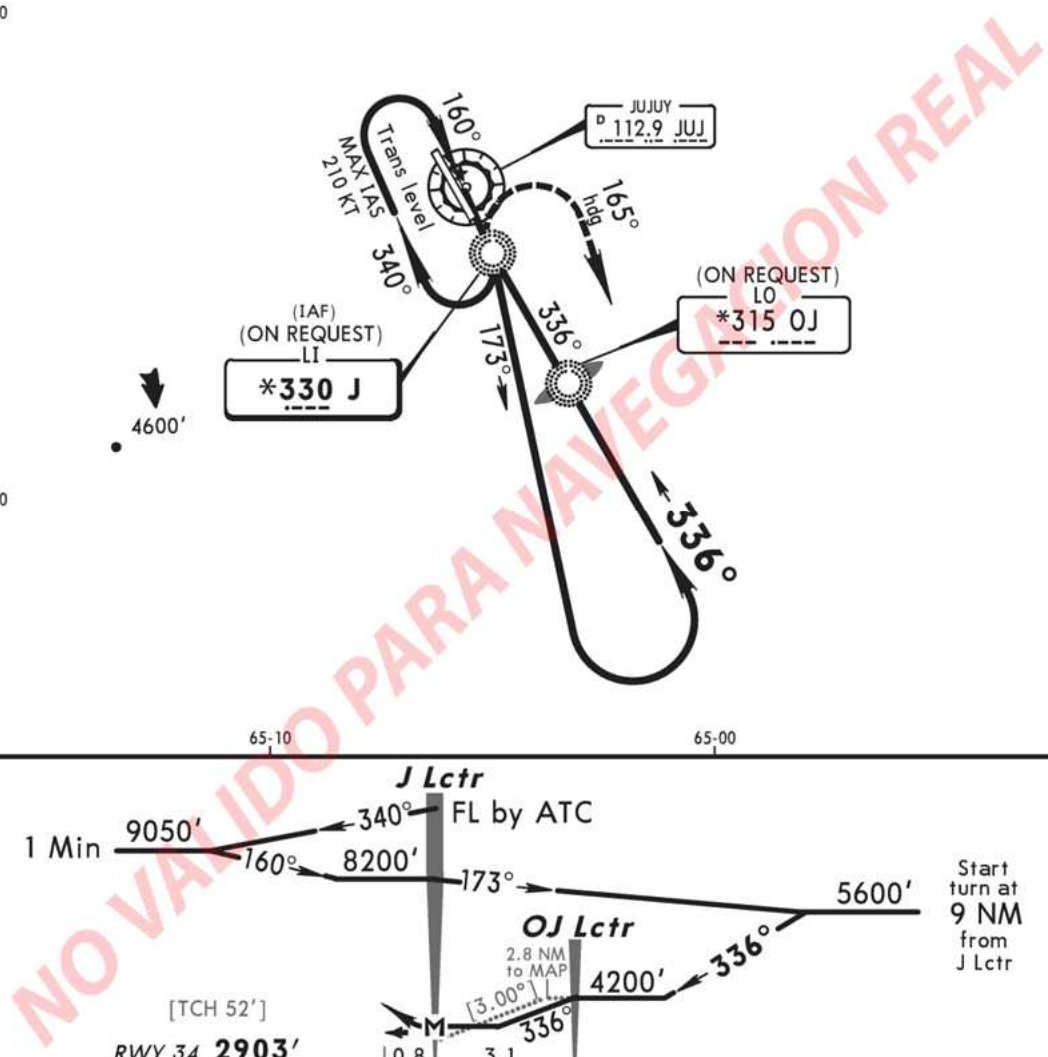
SASJ



JUJUY, ARGENTINA

GOBERNADOR  
HORACIO GUZMANMISSED APCH CLIMB  
GRADIENT MIN 3.0%No.4  
VOR DME LCTR LCTR Rwy 34



**MISSED APCH CLIMB  
GRADIENT MIN 3.0%**



Gnd speed-Kts	70	90	100	120	140	160		<b>9500'</b> 	<b>165°</b> hdg
Descent angle [3.00°]	372	478	531	637	743	849			
MAP at J Lctr									
QJ Lctr to MAP	3.1	2:39	2:04	1:52	1:33	1:20			

STRAIGHT-IN LANDING RWY34			CIRCLE-TO-LAND	
Missed apch climb gradient min 3.0%			Not Authorized West of Runway 16/34	
MDA(H) <b>3550'</b> (647')			Max	MDA(H)
ALS out			K15	
A	1600m	2000m	100	3670' (651') - 2000m
B			135	3730' (711') - 2800m
C	2800m	3200m	180	3800' (781') - 3700m
D	3200m	3600m	205	5010' (1991') - 4600m



# SID INFER4A (RWY 34)

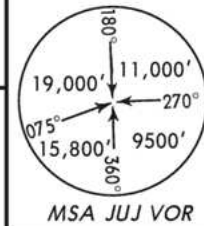
JUJUY, ARGENTINA

SASJ  
GOBERNADOR HORACIO GUZMAN

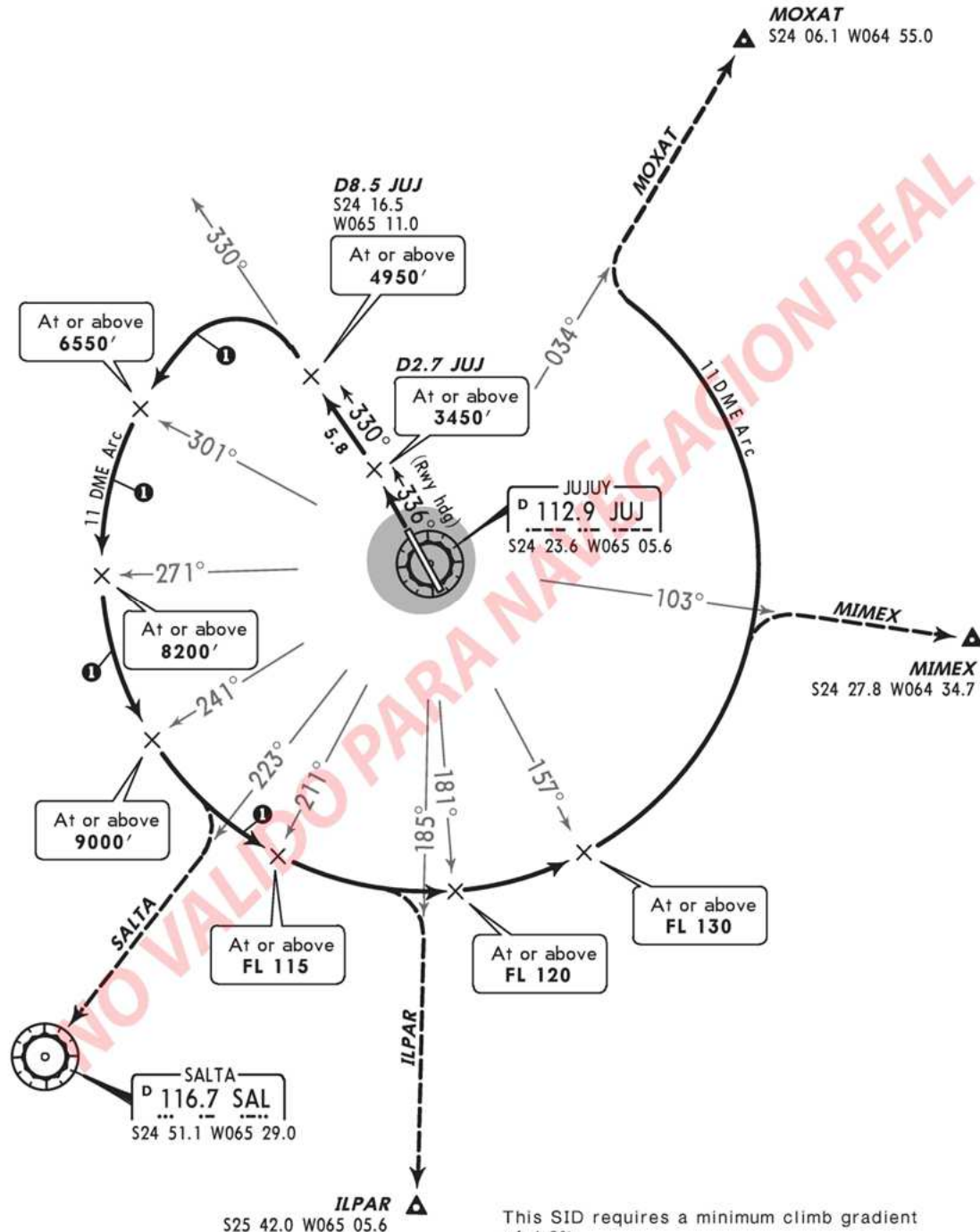
SID

Apt Elev  
3019'

Trans level: By ATC Trans alt: 9000'  
1. DME required.  
2. ① Maximum 200 KT between JUJ R-330 and R-211.



## INFER 4A DEPARTURE (RWY 34)



This SID requires a minimum climb gradient of 4.0%.

Gnd speed-KT	75	100	150	200	250	300
4.0% V/V (fpm)	304	405	608	810	1013	1215

### INITIAL CLIMB

**MAINTAIN** runway heading to a minimum of 3450'. Intercept JUJ R-330, arriving at JUJ R-330/D8.5 JUJ.

### ROUTING

Climbing LEFT turn to join the JUJ 11 DME Arc. Continue climb until intercepting the appropriate route and observe the minimum altitudes and flight levels.

SASJ

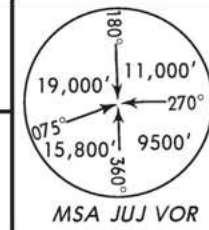
GOBERNADOR HORACIO GUZMAN

JUJUY, ARGENTINA

SID

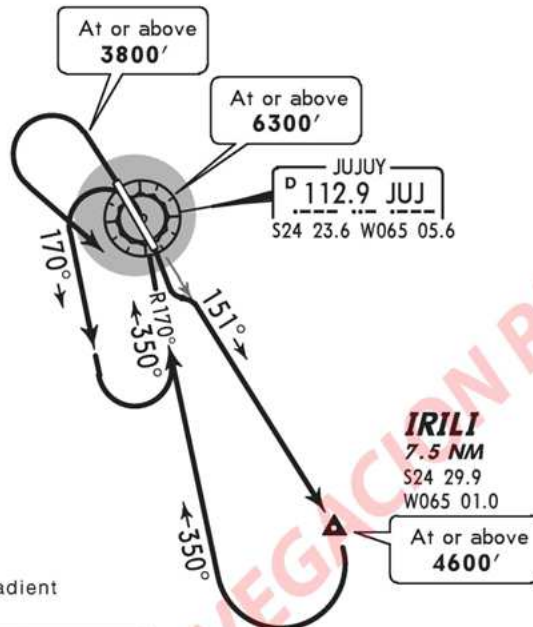
Apt Elev  
3019'

Trans level: By ATC Trans alt: 9000'



# IRILI 4A DEPARTURE

(RWYS 16, 34)

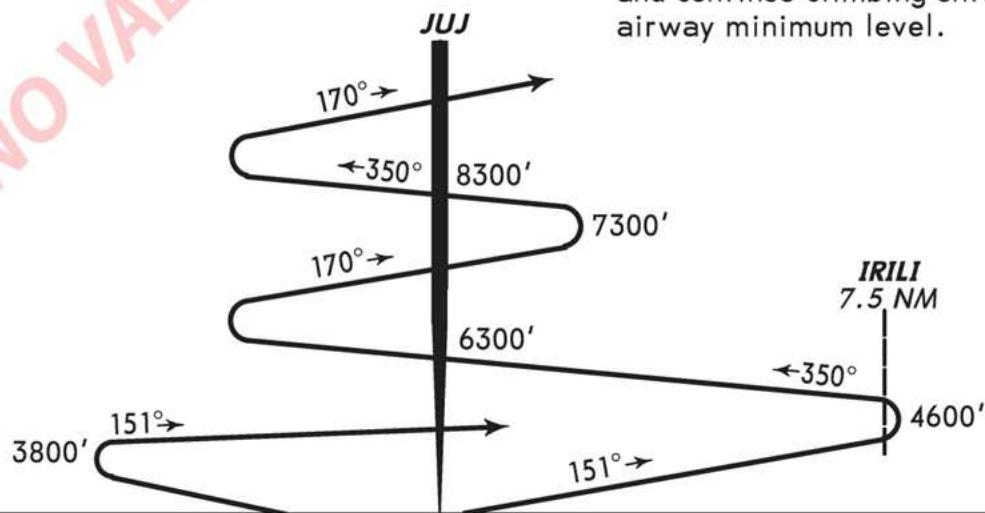


This SID requires a minimum climb gradient of 3.5%.

Gnd speed-KT	75	100	150	200	250	300
3.5% V/V (fpm)	266	354	532	709	886	1063

RWY	INITIAL CLIMB
16	After take-off, intercept JUJ R-151 while climbing.
34	<b>MAINTAIN</b> runway heading to at or above 3800'. Climbing LEFT turn to intercept JUJ R-151.
ROUTING	
Climb outbound on JUJ R-151 until IRILI (7.5 NM). Climbing RIGHT turn to return to JUJ on JUJ R-170.	

Join the holding pattern and continue climbing until airway minimum level.



# SID OSEBO4A (RWY 16)

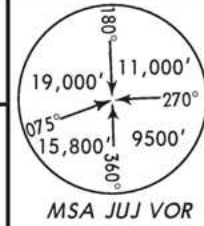
SASJ  
GOBERNADOR HORACIO GUZMAN

JUJUY, ARGENTINA

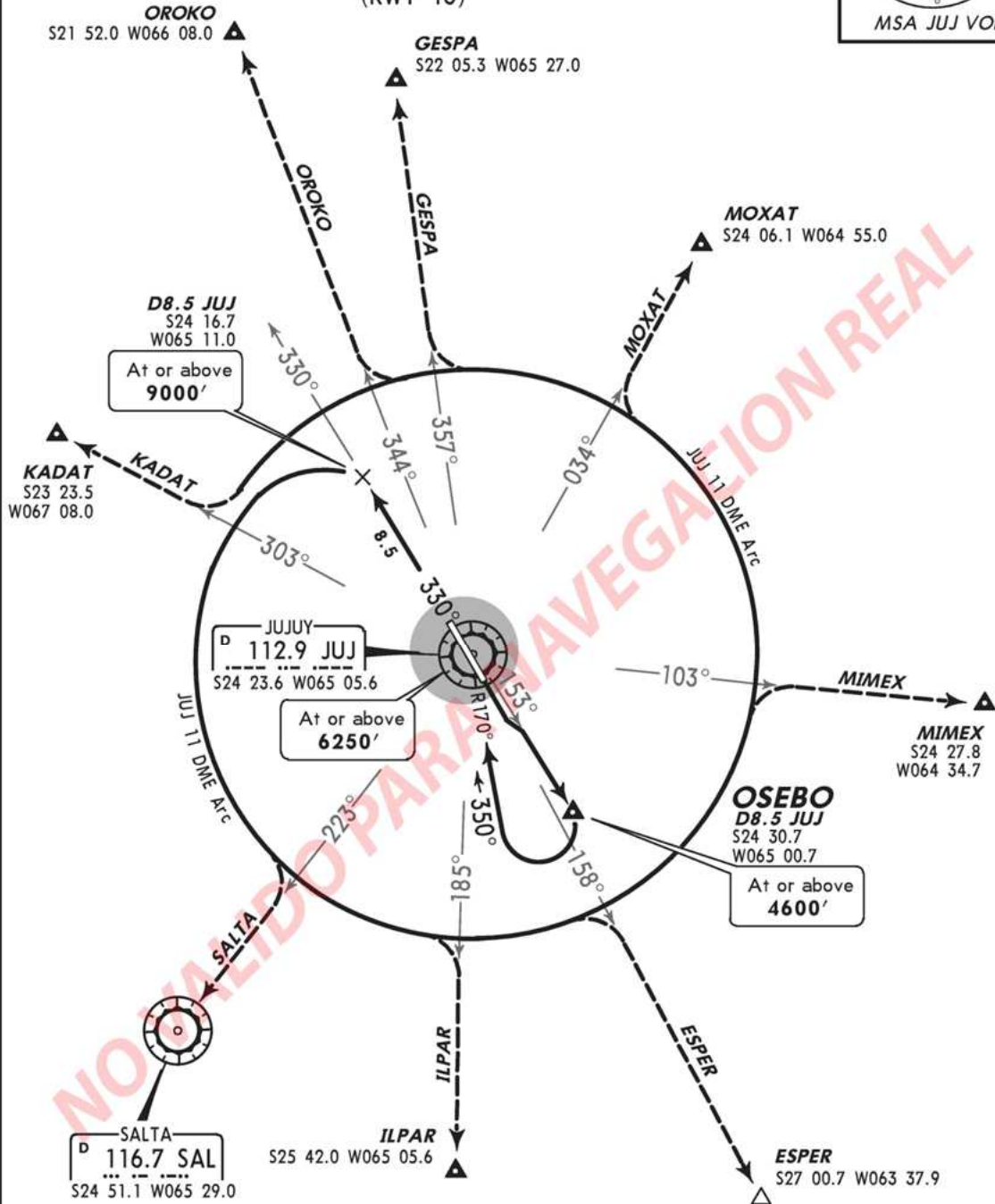
SID

Apt Elev  
3019'

Trans level: By ATC Trans alt: 9000'



## OSEBO 4A DEPARTURE (RWY 16)



This SID requires a minimum climb gradient of 3.3%.

Gnd speed-KT	75	100	150	200	250	300
3.3% V/V (fpm)	251	334	501	668	835	1003

### INITIAL CLIMB

After take-off climb to intercept JUJ R-153. Continue outbound on JUJ R-153 until OSEBO (D8.5 JUJ), to a minimum of **4600'**.

### ROUTING

Climbing RIGHT turn to 350° returning via JUJ R-170 to JUJ. Climb outbound on JUJ R-330 until JUJ R-330/D8.5. Climbing LEFT turn to join the JUJ 11 DME Arc. Continue climb on the JUJ 11 DME Arc until intercepting the corresponding route.



# SUPER4A (RWY 34)

JUJUY, ARGENTINA

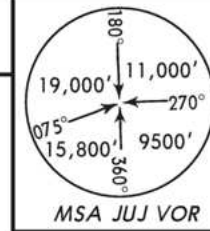
SID

SASJ

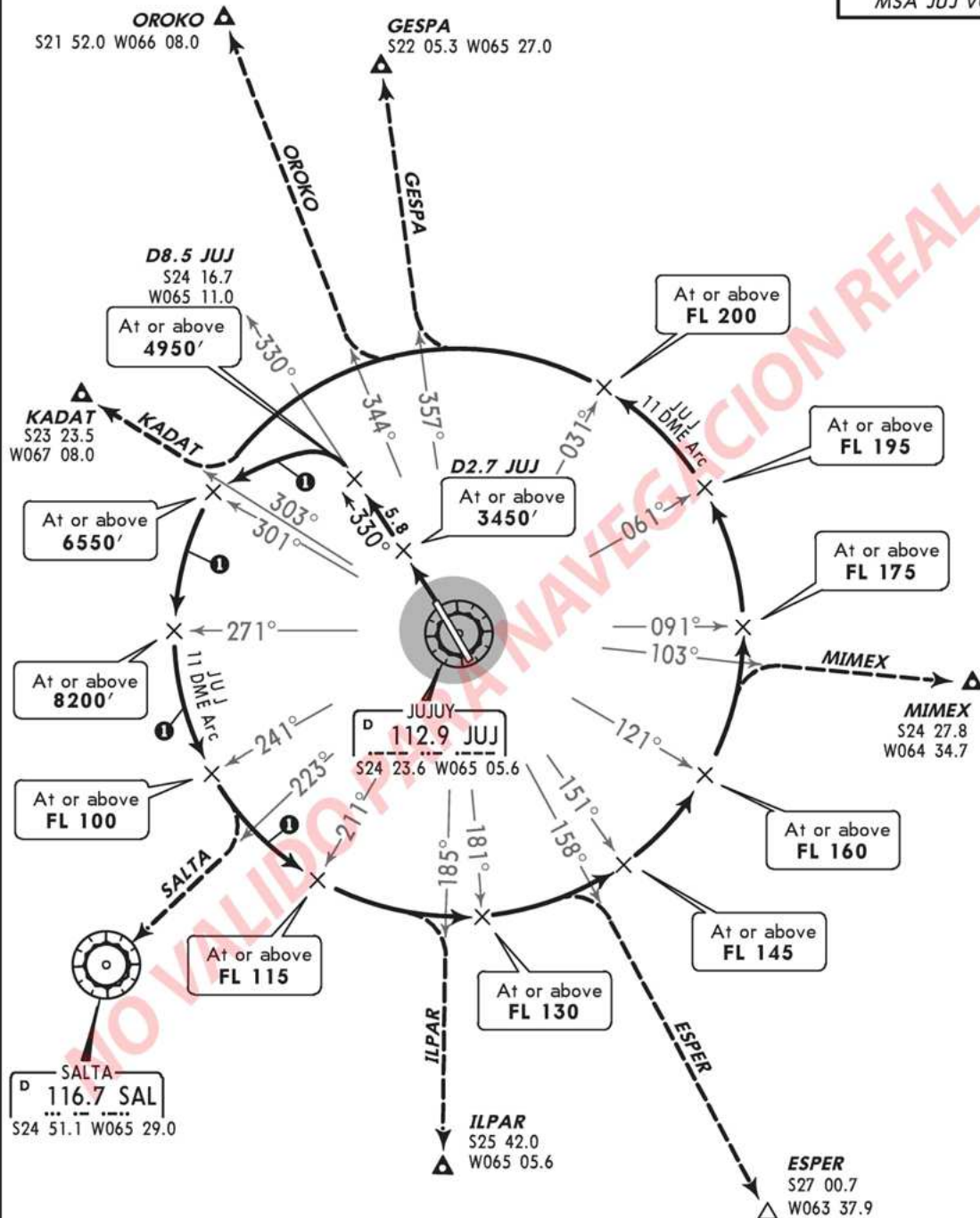
GOBERNADOR HORACIO GUZMAN

Apt Elev  
3019'

Trans level: By ATC Trans alt: 9000'  
1. DME required.  
2. ① Maximum 200 KT between JUJ R-330 and R-211.



## SUPER 4A DEPARTURE (RWY 34)



This SID requires a minimum climb gradient of 4.5%.

Gnd speed-KT	75	100	150	200	250	300
4.5% V/V (fpm)	342	456	684	911	1139	1367

### INITIAL CLIMB

**MAINTAIN** runway heading to a minimum of 3450'. Intercept JUJ R-330 arriving at JUJ R-330/D8.5.

### ROUTING

Climbing LEFT turn to join the JUJ 11 DME Arc. Continue climb until intercepting the corresponding route and observe the minimum altitudes and flight levels.



## JUJUY, ARGENTINA

GOBERNADOR HORACIO GUZMAN

**STAR**

MSA JUJ VOR

(RWY 34)

